

Pavement milling and resurfacing. Civil operations.
 Berm and Central median works, cut and cover.
 Isolated cesspit protection

Temporary aggregate stabilised access track for viaduct construction.

KEY
Erosion and Sediment Control

- Laydown Yard
- Silt Fence
- Temporary Access Track

NOTES
 1. DO NOT SCALE OFF THESE DRAWINGS,
 2. ALL DIMENSIONS AND DISTANCES ARE IN METRES UNLESS STATED OTHERWISE,
 3. REFER TO DRAWING E8234-1-RD-05-24-00150 FOR GENERAL NOTES AND LEGEND.

- NOTES**
1. All erosion and sediment controls will be installed and maintained in accordance with Auckland Council Guideline Document 2016/005 "Erosion and Sediment Control Guide for Land Disturbing Activities in the Auckland Region" (GD05).
 2. All locations of controls are indicative and are to be confirmed on site.
 3. The volumes of the sediment devices are to be confirmed following construction.
 4. Sediment retention measures will be cleaned of sediment when 20% full of sediment.
 5. Site monitoring will be undertaken before and immediately after rain as well as during heavy rainfall events. Any required maintenance or improvements to control measures will be undertaken immediately.
 6. Erosion and sediment controls can be removed following stabilisation of site and sign off from the Environmental Manager.

REV	DATE	REVISION DETAILS	APPROVED
A	24.03.23	Draft	

Drawn
 CS

Approved

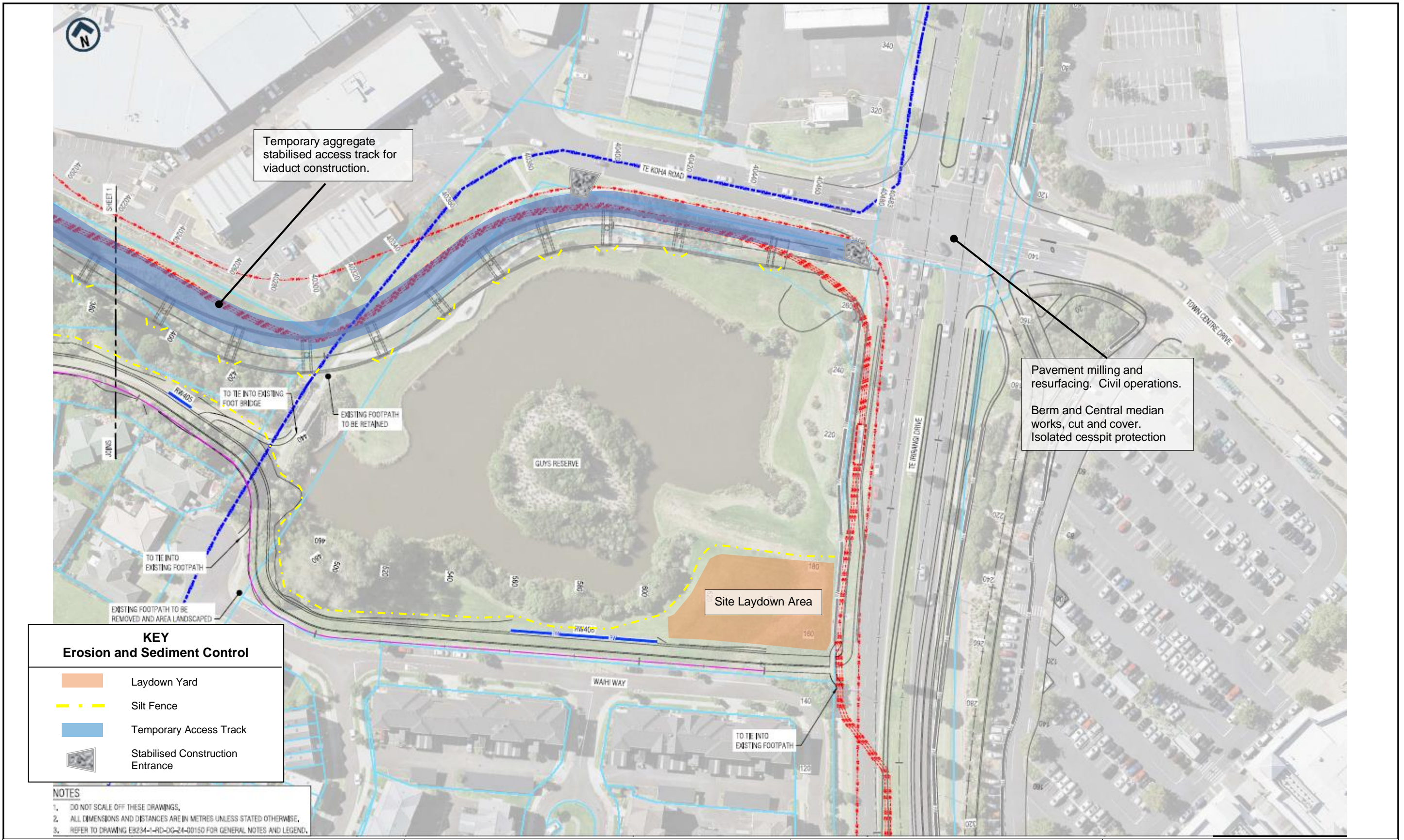
Date
 24.03.2023

Sheet No.
 1

Drawing Title
EB4-L EROSION AND SEDIMENT CONTROL
Guys Reserve Works

Drawing No.
 ESCP – EB4L-1

Revision
 A



KEY
Erosion and Sediment Control

	Laydown Yard
	Silt Fence
	Temporary Access Track
	Stabilised Construction Entrance

- NOTES**
- DO NOT SCALE OFF THESE DRAWINGS,
 - ALL DIMENSIONS AND DISTANCES ARE IN METRES UNLESS STATED OTHERWISE,
 - REFER TO DRAWING E8234-1-RD-00-24-00150 FOR GENERAL NOTES AND LEGEND.

- NOTES**
- All erosion and sediment controls will be installed and maintained in accordance with Auckland Council Guideline Document 2016/005 "Erosion and Sediment Control Guide for Land Disturbing Activities in the Auckland Region" (GD05).
 - All locations of controls are indicative and are to be confirmed on site.
 - The volumes of the sediment devices are to be confirmed following construction.
 - Sediment retention measures will be cleaned of sediment when 20% full of sediment.
 - Site monitoring will be undertaken before and immediately after rain as well as during heavy rainfall events. Any required maintenance or improvements to control measures will be undertaken immediately.
 - Erosion and sediment controls can be removed following stabilisation of site and sign off from the Environmental Manager.

REV	DATE	REVISION DETAILS	APPROVED
A	24.03.23	Draft	

Drawn
CS

Approved



Date
24.03.2023

Sheet No.
2

Drawing Title
**EB4-L EROSION AND SEDIMENT CONTROL
Guys Reserve Works**

Drawing No.
ESCP – EB4L-2

Revision
A